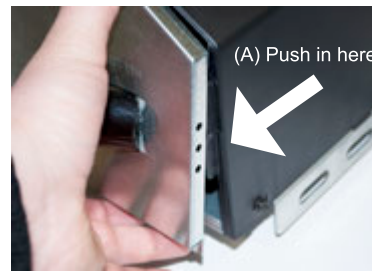


Limit Switch Removal and Reset

FOR BEST RESULTS IT IS RECOMMENDED TO REMOVE THE GARAGE DOOR OPENER HEAD UNIT FROM THE RAIL SYSTEM, REMOVE LIGHT DOMES & PLACE AS SHOWN ON A FLAT SURFACE.

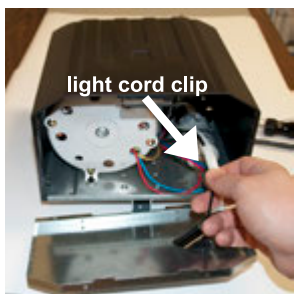


1. Remove the light cover from your opener. Grasp the bottom and top of the light cover. Pull the cover off in an angular motion starting with the bottom of cover. Remove light bulb, if installed.

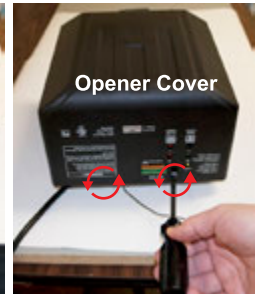
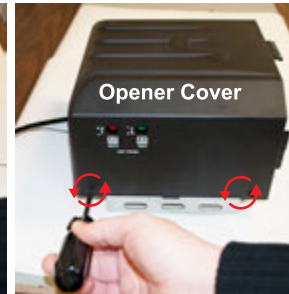
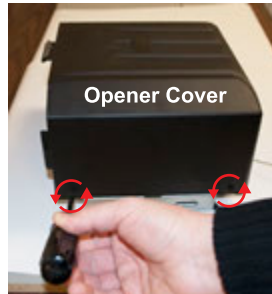


2. Using a Phillips screwdriver remove the two screws securing the bottom of the metal light cover.

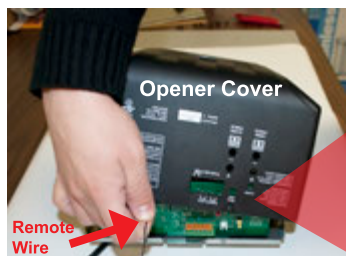
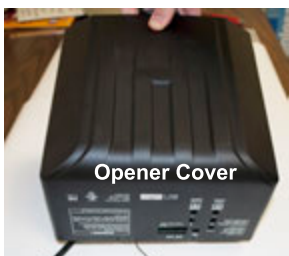
3. Press in on the sides of the plastic cover next to the metal light cover & at the same time pull on the bottom of the metal light cover. This will disengage the metal light cover from the plastic cover. Press down on the top tab & pull straight out to remove the metal light cover.



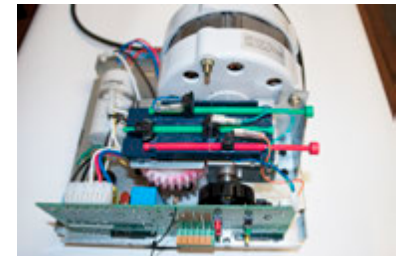
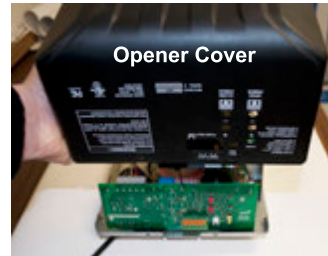
4. Unplug the light cord by pressing down on the light cord clip & separating the connectors. Remove the metal light cover.



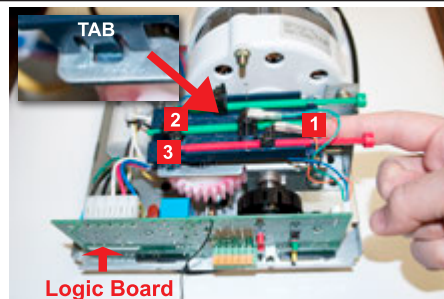
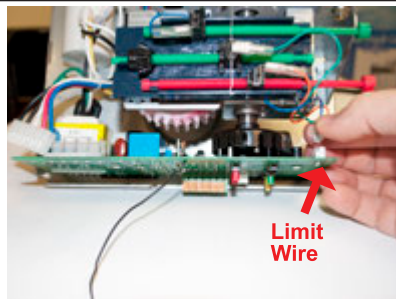
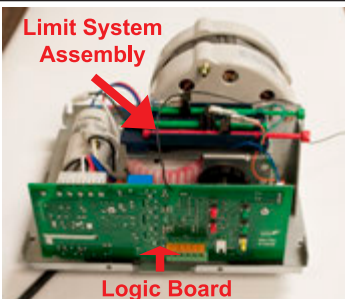
5. Using a Phillips screwdriver remove the six screws securing the bottom of plastic motor cover.



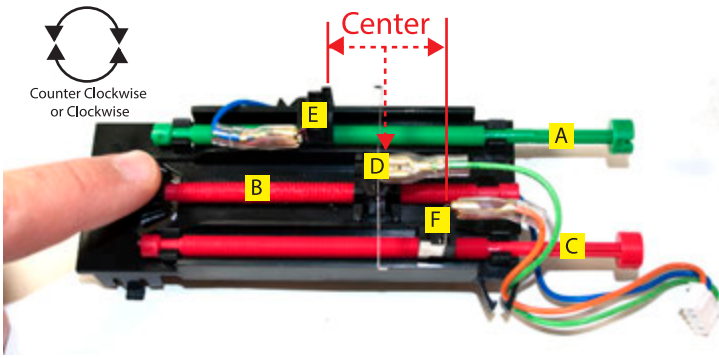
DO NOT DAMAGE



6. Remove the opener cover from the base unit. It is **EXTREMELY** important not to damage the open, close and learn buttons. Grasp the front of the cover (as pictured) and pull up and back on the cover to remove. Remove the remote wire from the opener cover. Finish by removing the opener cover.



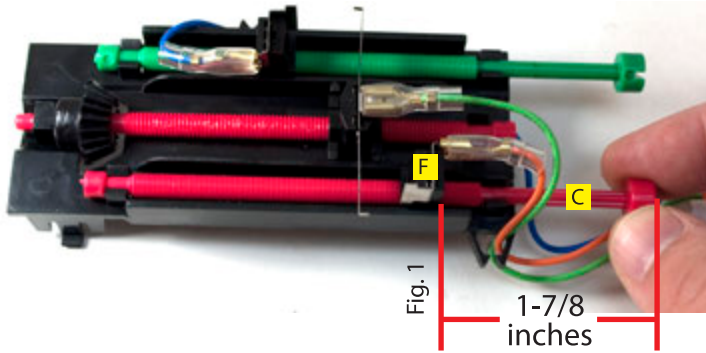
7. Remove the limit system assembly. First remove the limit wire from the logic board. Second push in the three tabs with your finger until you feel them disengage. Finish by pulling up gently on the limit system assembly to disengage.



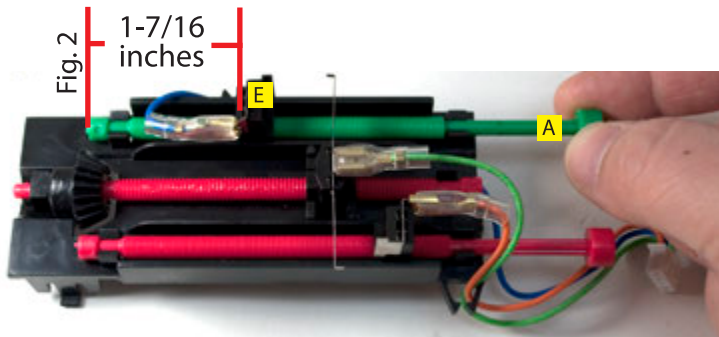
Resetting Limit Switch

12. With limit switch removed, adjust* the main travel limit screw (B) until the main stop module (D) is located in the center of (E) and (F).

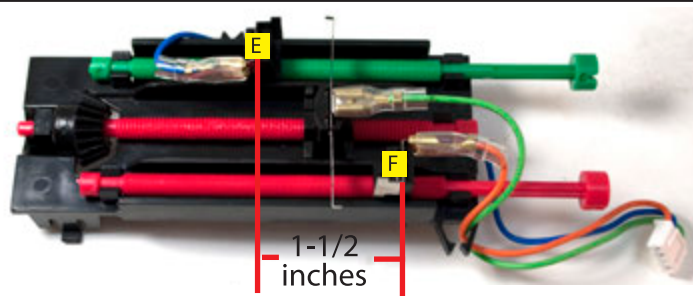
*Note: Depending on where the main stop module (D) is located turn the main travel limit screw (B) either clockwise or counter clockwise to center the main stop module (D).



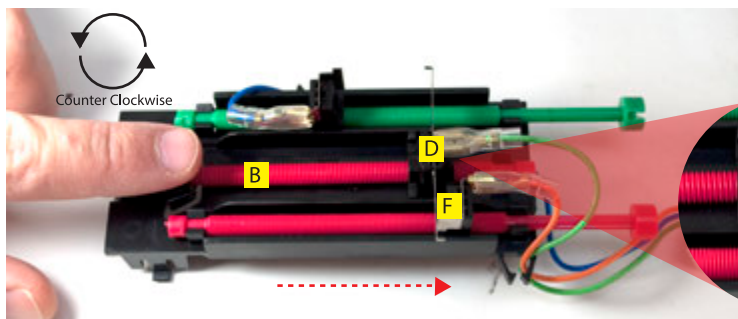
13. Adjust the close limit screw (C) by turning it either clockwise or counter clockwise until the close limit stop (F) is set according to the measurements shown in figure 1.



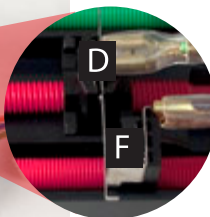
14. Adjust the open limit screw (A) by turning it either clockwise or counter clockwise until the open limit stop (E) is set according to the measurements shown in figure 2.



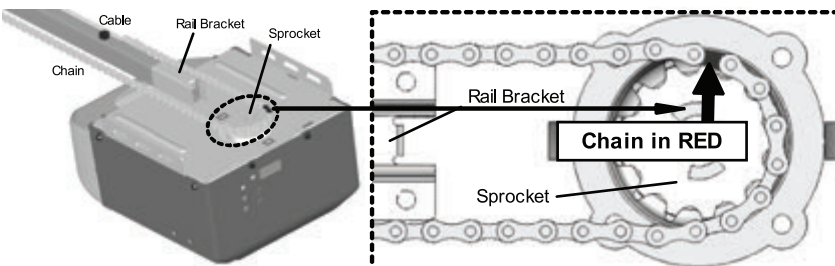
15. If properly adjusted Close limit stop (F) and Open limit stop (E) should be exactly 1-1/2 inches apart.



16. Turn the main limit travel screw (B) counter clockwise until the main stop module lightly touches the close limit stop (F)



17. Reinstall the limit system assembly and opener cover by reversing all steps.



18. IMPORTANT FINAL STEP!!

Opener chain must be reset to the factory preset position. A segment of chain marked in RED will be seen. Place this segment in the approximate location on the sprocket as shown in Fig.3. Reinstall the opener, the opener is now reset to the factory settings.