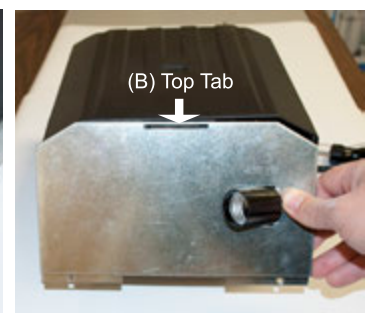
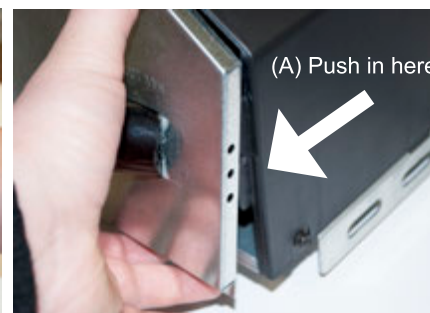


## Remove Cover and Logic Board

FOR BEST RESULTS IT IS RECOMMENDED TO REMOVE THE GARAGE DOOR OPENER HEAD UNIT FROM THE RAIL SYSTEM, REMOVE LIGHT DOMES & PLACE AS SHOWN ON A FLAT SURFACE.

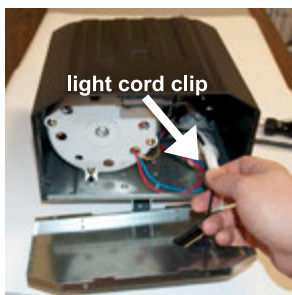


1. Remove the light cover from your opener. Grasp the bottom and top of the light cover. Pull the cover off in an angular motion starting with the bottom of cover. Remove light bulb, if installed.

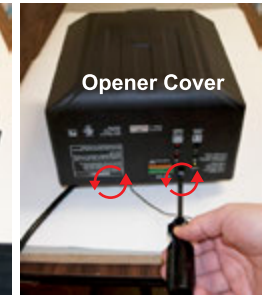
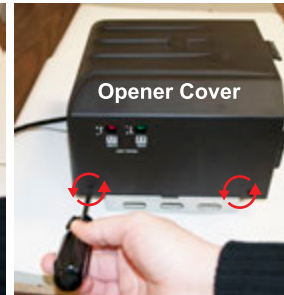


2. Using a Phillips screwdriver remove the two screws securing the bottom of the metal light cover.

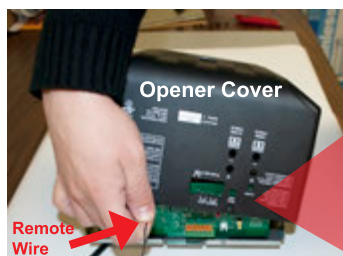
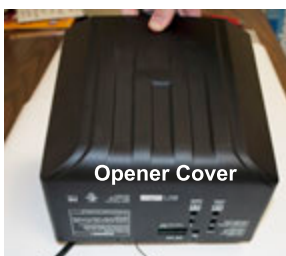
3. Press in on the sides of the plastic cover next to the metal light cover & at the same time pull on the bottom of the metal light cover. This will disengage the metal light cover from the plastic cover. Press down on the top tab & pull straight out to remove the metal light cover.



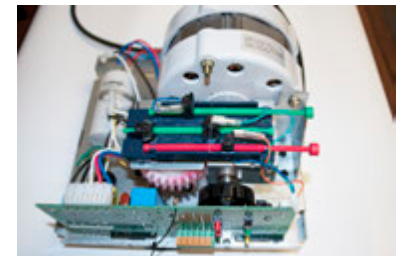
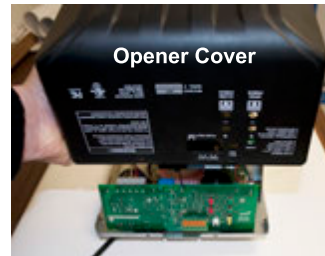
4. Unplug the light cord by pressing down on the light cord clip & separating the connectors. Remove the metal light cover.



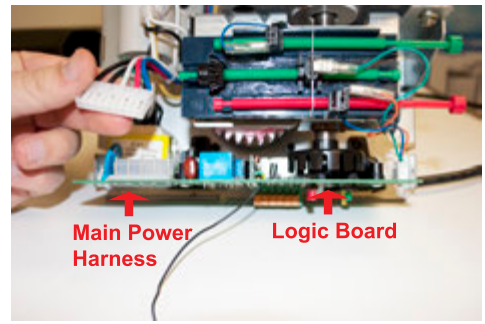
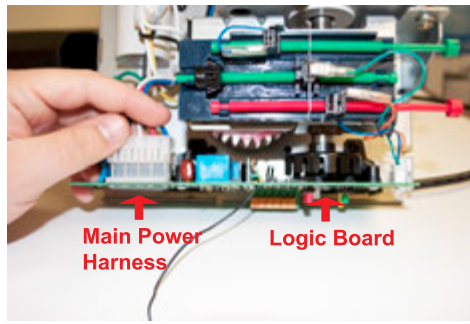
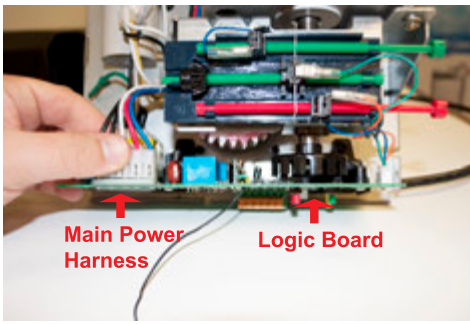
5. Using a Phillips screwdriver remove the six screws securing the bottom of plastic motor cover.



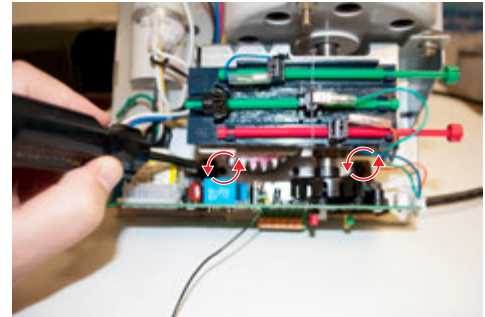
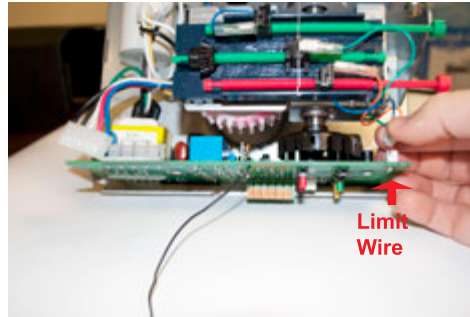
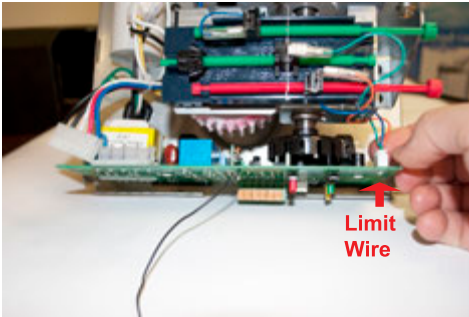
**DO NOT DAMAGE**



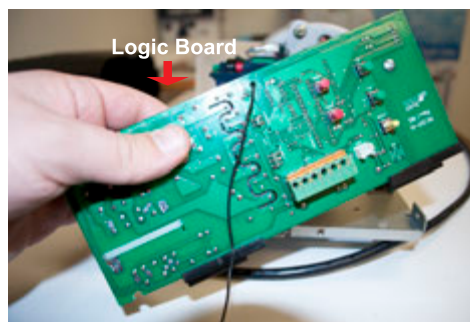
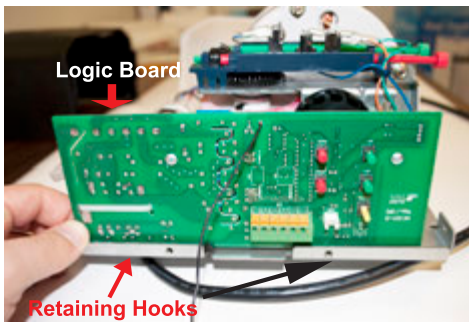
6. Remove the opener cover from the base unit. It is **EXTREMELY** important not to damage the open, close and learn buttons. Grasp the front of the cover (as pictured) and pull up and back on the cover to remove. Remove the remote wire from the opener cover. Finish by removing the opener cover.



7. Remove the main power harness from the logic board. Gasp the main power harness between your fingers and pull up lightly until it disengages from the logic board.



8. Remove the limit system wire assembly from the logic board. Gasp the limit system wire connection between your fingers and pull lightly until it disengages from the logic board. Remove the two retainings screw on the logic board using a Phillips screw driver.



9. Pull the logic board towards the back of the opener to disengage the black retaining hooks. Finish by removing the logic board. To install the logic board repeat all steps in reverse.