

UNPLUG THE OPENER FROM POWER!

FOR BEST RESULTS IT IS RECOMMENDED TO REMOVE THE GARAGE DOOR OPENER HEAD UNIT FROM THE RAIL SYSTEM, REMOVE LIGHT DOMES & PLACE AS SHOWN ON A FLAT SURFACE.

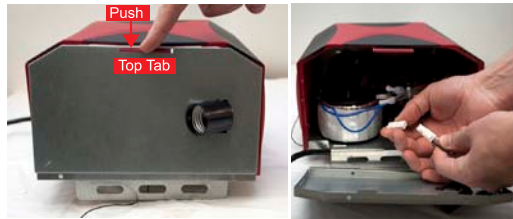
Remove Logic Board



1. Using a Phillips screwdriver remove the two screws securing the bottom of one of the metal light covers.



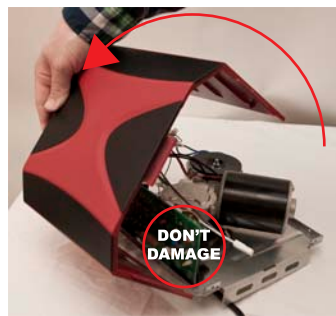
2. Press in on one side of the plastic cover next to the metal light cover & at the same time pull on the bottom of the metal light cover. This will disengage the metal light cover from the plastic cover. Repeat steps 1 & 2 for second light cover.



3. Press down on the top tab & pull straight out to remove the metal light cover. Unplug the light cord by pressing down on the light cord clip & separating the connectors. Remove the second metal light cover.

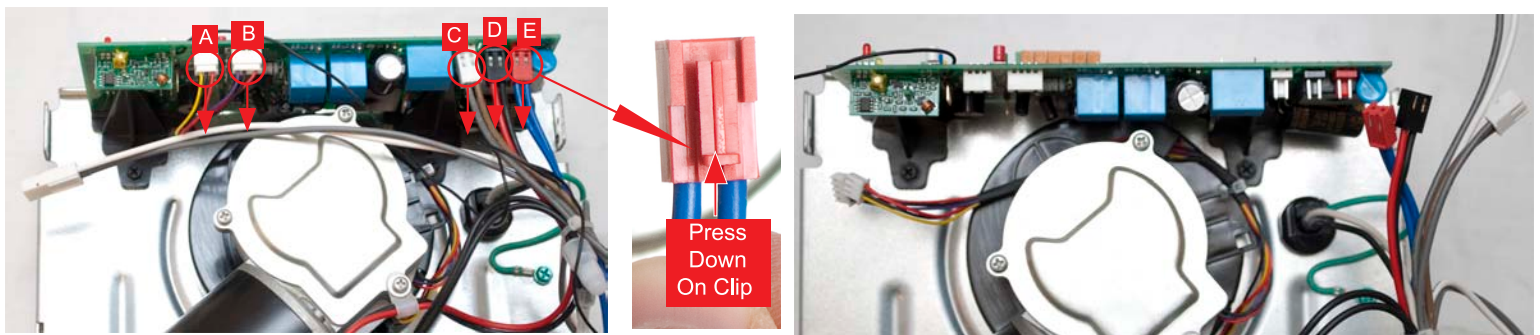


4. Using a Phillips screwdriver remove the four screws securing the bottom of plastic motor cover.

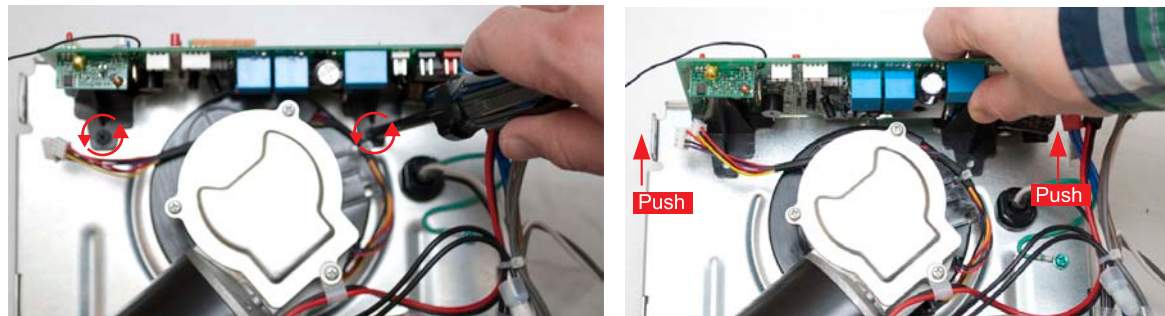


5. To remove the plastic motor cover grab the front of the plastic motor cover & swing up towards the back of the opener. Take care not to damage any of the buttons on the logic board. Once removed the opener should look like this ->

Questions? Contact Us First?
www.gdohelp.com
1-877-436-4402



6. Remove all of the five wire connections (A-E) connected to the logic board. Connections A & B will pull directly off. Connections C, D, & E require you to press & release a clip located on the bottom of each connector. Once the clip is pressed, remove the connection.



7. Using a Phillips screwdriver remove the two screws securing the logic board to the opener chassis. Disengage the logic board by pushing the logic board away from motor. Once disengaged pull straight up to remove. Repeat all seven steps, in reverse, to install the logic board.

