

Installing the Chain

WARNING

To prevent **SERIOUS INJURY**:

- DO NOT connect power until instructed.
- Keep hands and fingers clear from sprocket during operation.
- Wear gloves when installing chain/belt and cable.
- Keep hands and fingers away from joints and possible sharp edges.

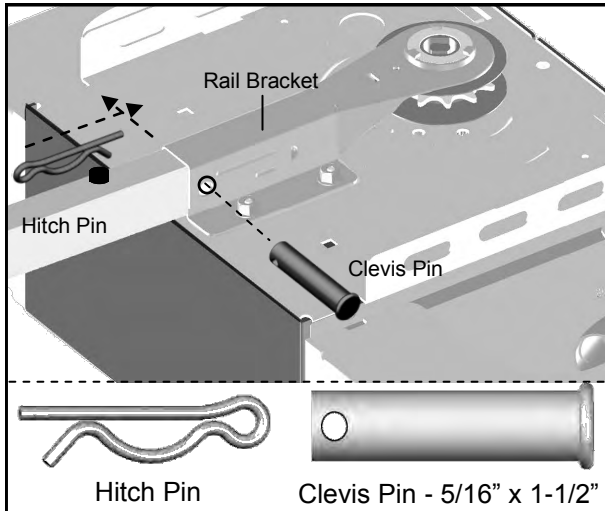


Fig.1

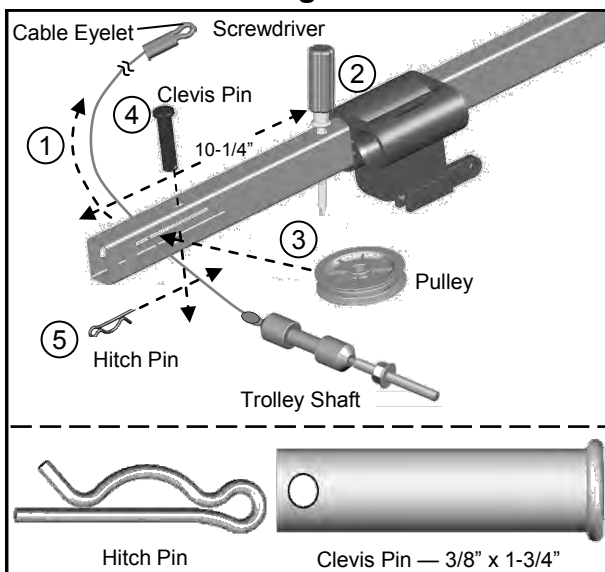


Fig.2

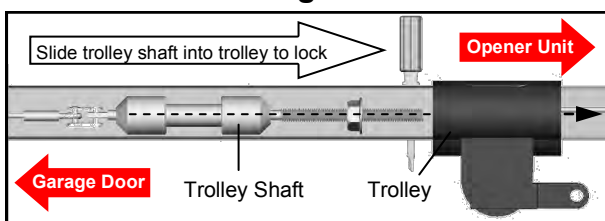


Fig.3

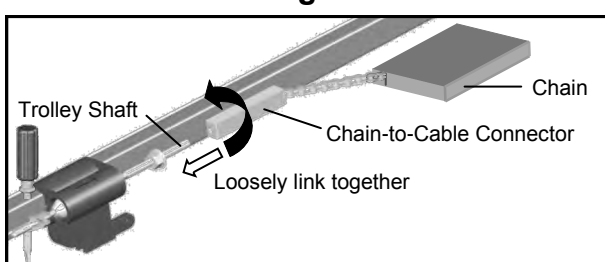


Fig.4

To Secure the Rail on the Opener

With the End Segment of the rail fully inserted into the Rail Bracket, insert a 5/16" x 1-1/2" Clevis Pin through the hole and lock it into position with a Hitch Pin as shown in Fig.1.

To Assemble the Header Section of Rail

Follow steps shown in Fig.2:

1. Remove the "Trolley Shaft and Cable" from the Chain carton and lay it beside the rail assembly. Hold Cable Eyelet on the end of cable and thread about 20" (50cm) through the slot on the Header Segment of the rail.
2. Insert a temporary screwdriver into the hole approximately 10-1/4" from the end of the Rail - Header Segment. Slide the trolley against this screw driver. The trolley must stay in this position for proper alignment of the chain.
3. Insert the Pulley into the opening while the cable is hanging.
4. Secure the Pulley by inserting the 3/8" x 1-3/4" Clevis Pin through the top of the rail.
5. Lock the Clevis Pin with a Hitch Pin. Rotate the Pulley to ensure it spins smoothly.

Slide the Trolley Shaft into the Trolley until a "click" is heard when they are connected and locked, as shown in Fig.3.

To Link Cable with Chain

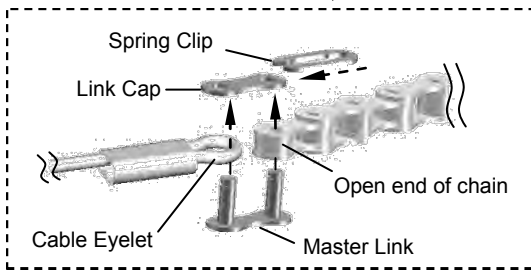
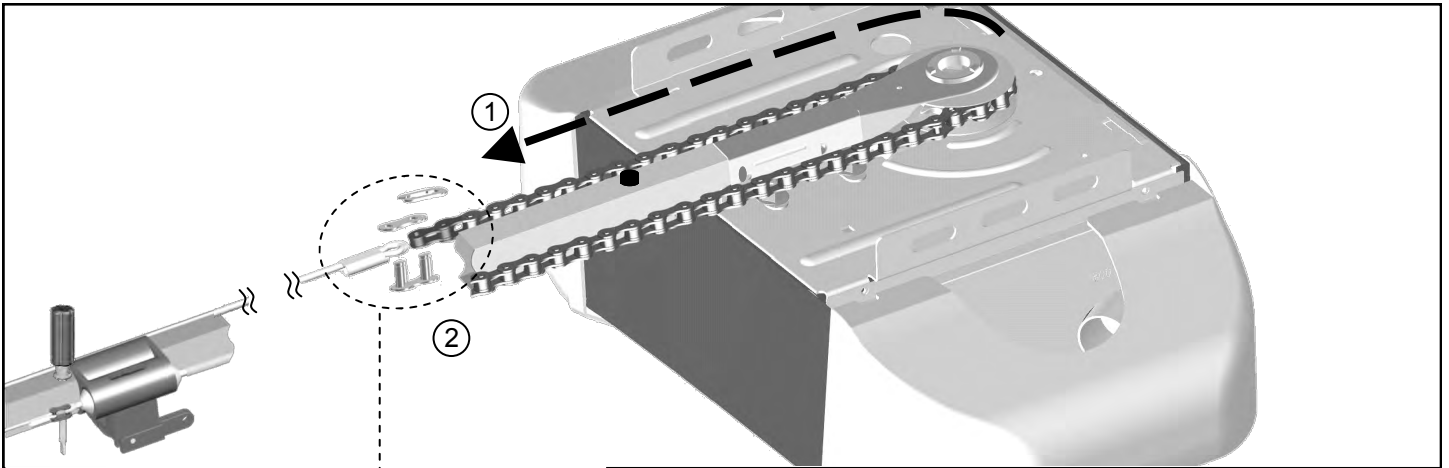
Refer to Fig.4. Place the chain carton beside the rail, hold the "Chain to Cable Connector" and pull about 8" (20cm) of chain from the box. Thread the Chain to Cable Connector onto the Trolley Shaft so that they are loosely linked together.

Installing the Chain

WARNING

To prevent **SERIOUS INJURY**:

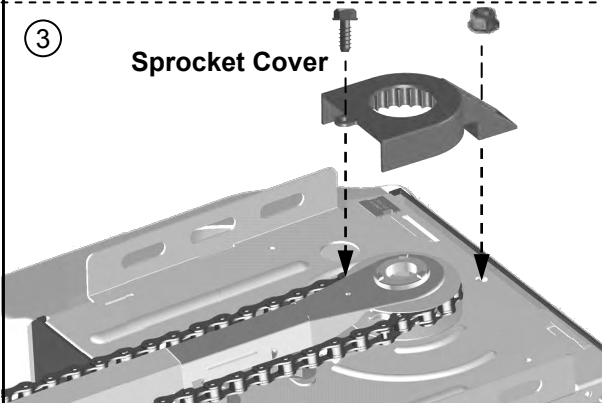
- DO NOT connect power until instructed.
- Keep hands and fingers clear from sprocket during operation.
- Wear gloves when installing chain/belt and cable.
- Keep hands and fingers away from joints and possible sharp edges.



To Connect and Tension the Chain

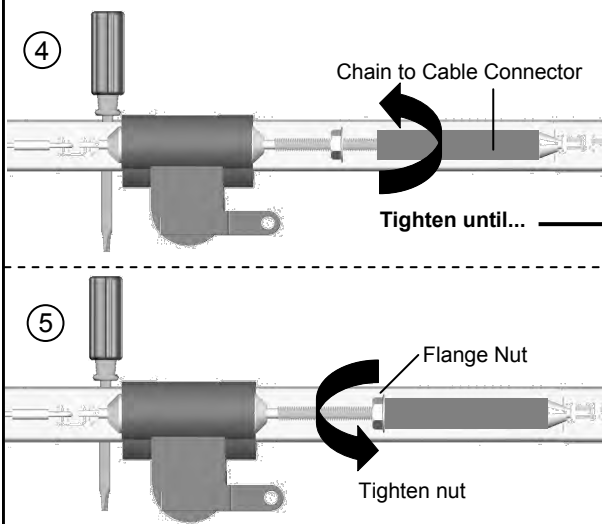
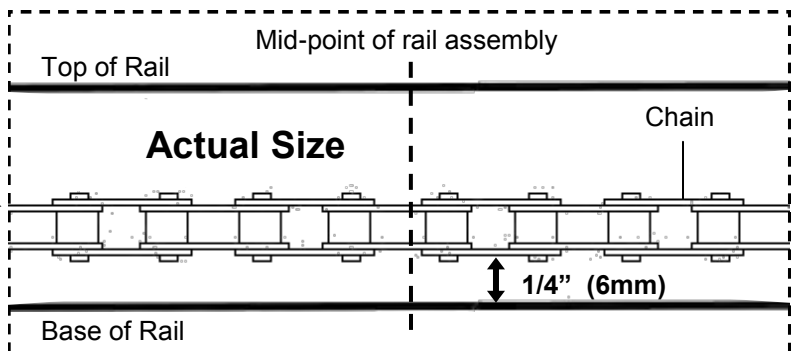
Follow steps shown in Fig.1 to connect & tighten the chain:

1. Align the open end of the chain to the Cable Eyelet and connect together using the Master Link Set.
2. With the trolley positioned against the screwdriver, pull the remaining chain straight along the rail and engage chain teeth around the sprocket. (Make sure the chain is not twisted around the rail.)
3. After the chain is connected, attach the Sprocket Cover to the opener with the screw and nut provided.



*** VERY IMPORTANT! ***
THE SPROCKET COVER MUST BE SECURELY INSTALLED!

4. Rotate the Chain to Cable Connector towards the Trolley Shaft until the chain is slightly loose about 1/4" (6mm) above the base of the rail. Refer to the actual-sized illustration below for proper chain tension.



5. Tighten the Flange Nut on Trolley Shaft against the Chain to Cable Connector.

Remove the temporary screw driver holding the position of the trolley.